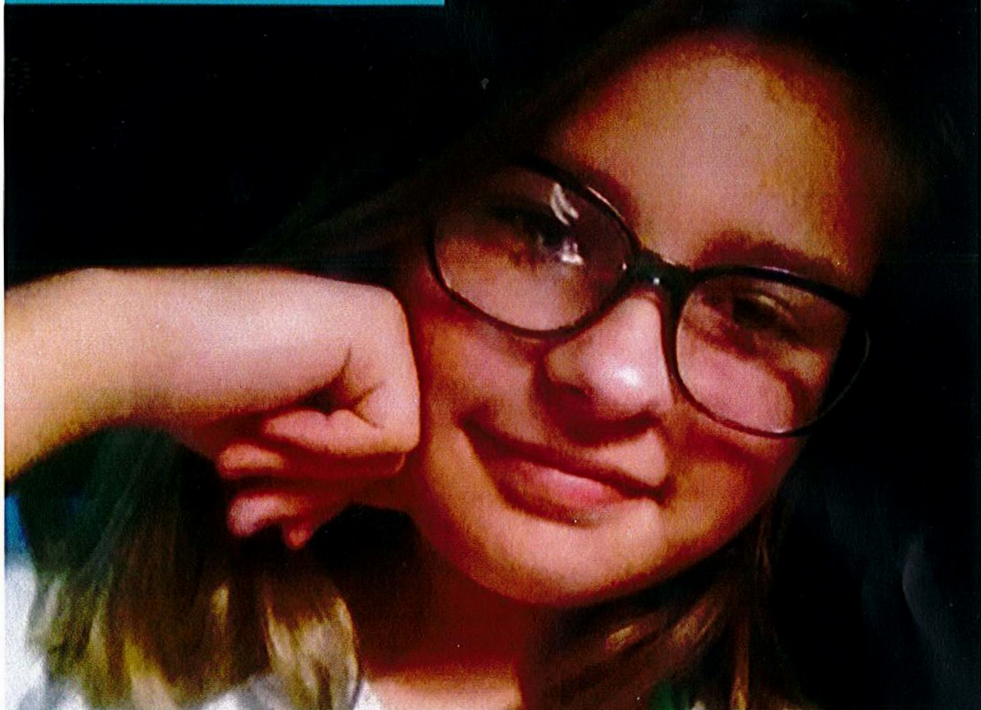




**EPILEPSY
FOUNDATION**
Indiana



Greater Lafayette Area Walk to End Epilepsy

**Save The Date | October 19 | Tapawingo Park
Details Forthcoming**

Lily's family will honor her legacy by raising awareness about and seeking answers to the disease that took her life. They need your support and encourage you to walk with them on this journey.

YOU CAN HELP NOW!

Send donations in memory of Lily Cramsey to:

1-800-213-5821 | epilepsy.com/donate

Epilepsy Foundation, 1100 W. 42nd St, Suite 140, Indianapolis, IN 46208